



CHEFMATE BASIC TOUCH CMG10HUWUICPSX



FOUR MIXTE GAZ DIGITAL, 10 NIVEAUX

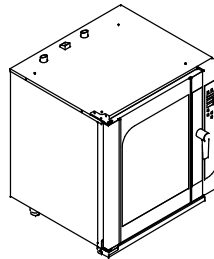
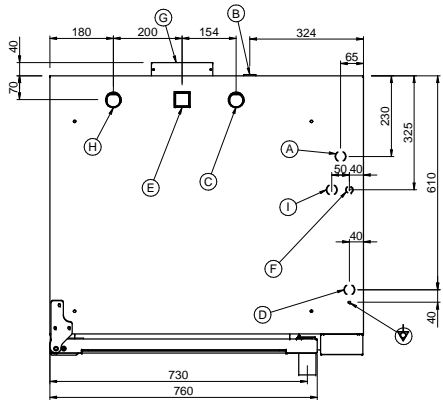
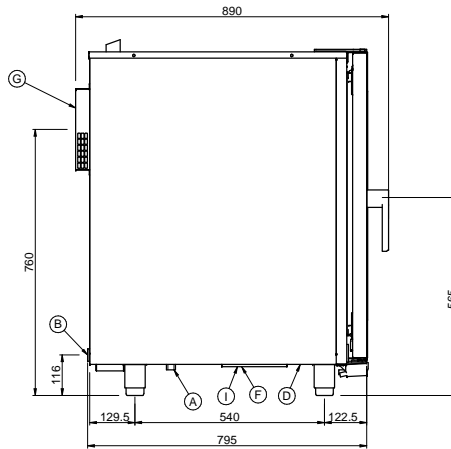
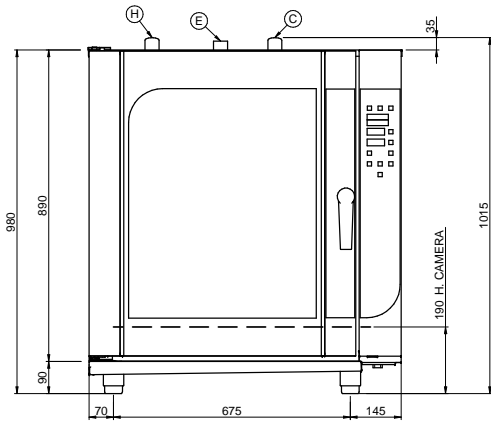
SPÉCIFICATIONS TECHNIQUES:

Capacité niveaux	10
Typologie bac	GN 1/1 - 60x40cm
Injection vapeur	direct
Puissance gaz (kW)	19.5
Dimensions exterieure - LxPxH (cm)	89x79,5x98

SPÉCIFICATIONS SUPPLÉMENTAIRES:

Chambre de cuisson - LxPxH (cm)	63x44x71
Espacement des grilles (mm)	70
Energie (N)	230V 1N 50Hz
Poids (kg)	180

Destiné aux chefs qui recherchent la simplicité d'utilisation et les résultats de cuisson parfaits. Chefmate Basic Touch est destiné aux chefs qui souhaitent obtenir des résultats parfaits au quotidien au travers de l'utilisation d'un four mixte qui leur offre simplement l'essentiel. Tous les combis sont Full optional avec HU Contrôle d'humidité / W Lavage automatique / U port usb / ICP Sonde interne multipoints inclus.



- A: INGRESSO ACQUA ADDOLCITA 3/4"G
- B: SCARICO ACQUA 1" G
- C: TUBO SFIATO (VAPORE) D 40mm
- D: INGRESSO CAVO DI ALIMENTAZIONE ELETTRICA
- E: TUBO ASPIRAZIONE ARIA
- F: INGRESSO TUBO DETERGENTE
- G: VENTOLA RAFFREDDAMENTO POSTERIORE
- H: SCARICO FUMI GAS
- I: INGRESSO GAS DA RETE 3/4G

UPDATED				MATERIAL	-	Thk	-	Formal feedstock	-	Dimensions are in mm		SURFACE TOLERANCES		
				FINISHED OR TREATMENT	-	Thk Treat. μ	-	Color	-	GENERAL TOLERANCES		3.2 \sqrt{r}		
				USED FOR	FORNI CHEFMATE CMG10-CMFG10-CYG10		NEW:	-	Scale	1/10	Date	26/11/14	Approved by	
							TITLE	SCHEMA INSTALLAZIONE		Raw Code	-	Deep Drawing Code	-	Drawn by
	REV.		MODIFICATION	DATE	MODIFIED BY	BRESCELLO (RE) - ITALY	CHEFMATE CMG10-CMFG10-CYG10	Imploded Code	-	Impressed Code	-	Impressed Code	-	Drawn of

La Ditta si riserva, a termini di legge, la proprietà di questo disegno con divieto di riprodurlo o di renderlo pubblico a Terzi senza la Sua autorizzazione.
The Company reserves the right by law, the property of this drawing with no copy or to make it public to any third party without your permission.